

IMD Drive

Loading of operating system (OS)

1. Condition :

When you power up the drive if fixed letter E is seen on the screen that is because the drive have not OS. You must load the OS.



Status display



The loading of the OS causes the loss of parameters and tasks saved in the drive.

2. Necessary equipment:

Computer with native serial Port or an USB to Serial adapter certified by Serad.

Communication cable CIMDP.

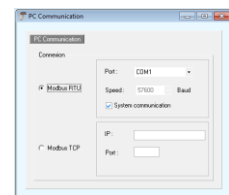
Corresponding iDPL software to OS version that you want.

3. Loading OS

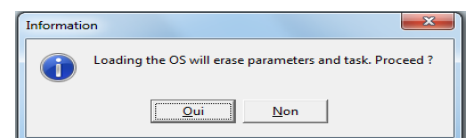


- Connect the drive to the PC with the CIMDP cable.
- Launch the iDPL software with the **Start** menu.

- In the welcome window, select **Abort**
- Go to **Options \ Com PC** and check the good setting of serial communication port.
- Go to **Options \ Accessibility \ Advanced parameters**
- Go to **Options \ Load OS**



- In the pop-up windows click on **Oui**
- The loading process begins



- At the completion of the loading, click on **OK**
- Click again on **OK**

